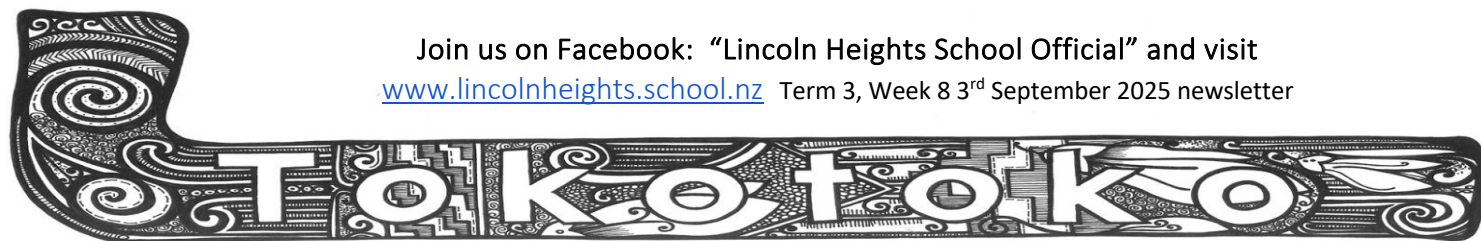


Join us on Facebook: "Lincoln Heights School Official" and visit  
[www.lincolnheights.school.nz](http://www.lincolnheights.school.nz) Term 3, Week 8 3<sup>rd</sup> September 2025 newsletter



Our REACH values stand for Respect. Engage. Aware. Celebrate. Honest.

Me mahi tahi tatou mō te oranga o te katoa – We should work together for the wellbeing of everyone

Office cell phone: 021 022 69879

Absences cell phone: 022 0433 026

Kia ora and Mālō e lelei whanau



Not to be one of those people, but Christmas is only 113 days away and we only have 12 more school days left in the term. Term 4 is a hat term, so make sure your child is coming to school with a named school hat each day.

Over the next two weeks children in year 3-8 will be undertraining their progress assessments and this information will be used to support their overall progress and achievement for the year.



**Strategic Plan survey** – the Board has employed Identity Impact to gather and analyse all the information gathered from our surveys. Please complete this [Whanau Survey](#). There will also be the opportunity to meet in some focus group settings as well. I know it's not as topical or controversial as parking or traffic, but every voice will help to shape our strategic plan.

This week is Conservation Week and Whaea Jen, our amazing teacher in room 28 has organised for our tamariki to get involved and do our bit! This week we will be focused on planting! Yrs 3-8 will be planting native plants and Yrs 0-2 will be planting seeds. Bird watching, harakeke weaving, rope making, nature based mandala art amongst other things will also be happening this week. If you are a parent with a green thumb and have some spare time we would love to hear from you.



Thanks to those who donated for our Whanau and Friends bingo night last Friday, and for those who attended to support. It was a great night with lots of money raised to make our Moemoe Fou Samoa 2026 trip a reality!



**Save the Date** – Fathers' Day Breakfast for all the amazing Dads, Poppas, Uncles, big brothers and important men in our children's lives, is this Friday. We will be in the staffroom from 7.30am to 8.30am to acknowledge the amazing work our men do for our Tamariki. See you there.

We will be having delicious bacon butties so come along and enjoy a relaxing start to the day and chat to other amazing men or just grab a roll on the run! We know how busy you all are!

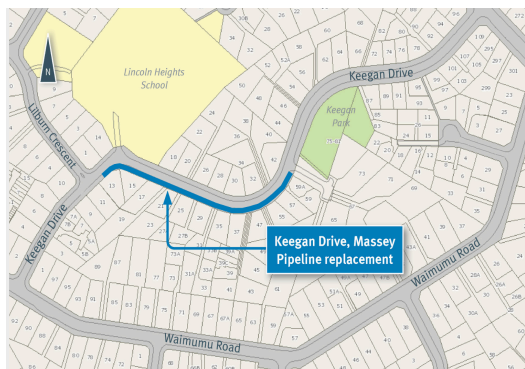
Moemoe Fou Bake sale next Tuesday 9 September. Send along your gold coins and notes for some baked deliciousness!

**Important reminder about the Keegan Drive Street Trial** – Lincoln Heights and Auckland Transport are trialling the closure of Keegan Drive mornings and afternoons from Day 1 Term 4. Keegan Drive will be coned off from Lincoln Rd intersection and at the bottom of the hill on Keegan Drive. Walking buses for our younger students will be arranged and parents are always welcome to park a little further away and walk down Keegan Drive to get your child.

I have had some amazing conversations with parents about how this will work and what it will look like. At this stage we are still in discussion with Auckland Transport and as soon as a plan is finalised, we will share the plan with you. There have been some awesome questions asked and suggestions made by parents. I have forwarded these all on to Auckland Transport. I have also done a physical drive of the proposed closed off street and we have raised some concerns about resident on street parking and the ability to turn at the closed point. The use of Lilburn Ave as a drive and turn is also problematic as the street is narrow and with cars parked on either side, it is very difficult to navigate. All of these concerns have been shared with AT.



Watercare will begin work on Keegan Drive next Wednesday – 10 September 7am – 7pm Monday to Friday. They will be working for the next 5 weeks. We anticipate that this will impact parking even further as there will be reduced street parking, reduced lane widths, reduced speed limits, pedestrian detours and stop/go traffic control. Please be respectful of Watercare staff and our neighbours.



This map shows the areas impacted by the watermain upgrade and covers the 'School Road Closure' trial area as well.

We have also been advised that there may be a water shutdown. If the school is in the impacted area, we may need to close the school for part or all of the day, depending on when the shutdown occurs. This is due to Health and Safety requirements and the need to have flushing toilets, hand washing facilities and drinking water. If we are impacted, it is likely that it will be after 8 October (towards the end of the project). We will be given 5 days advance notice if we will be impacted and we will advise you as soon as possible to reduce the impact on whanau.

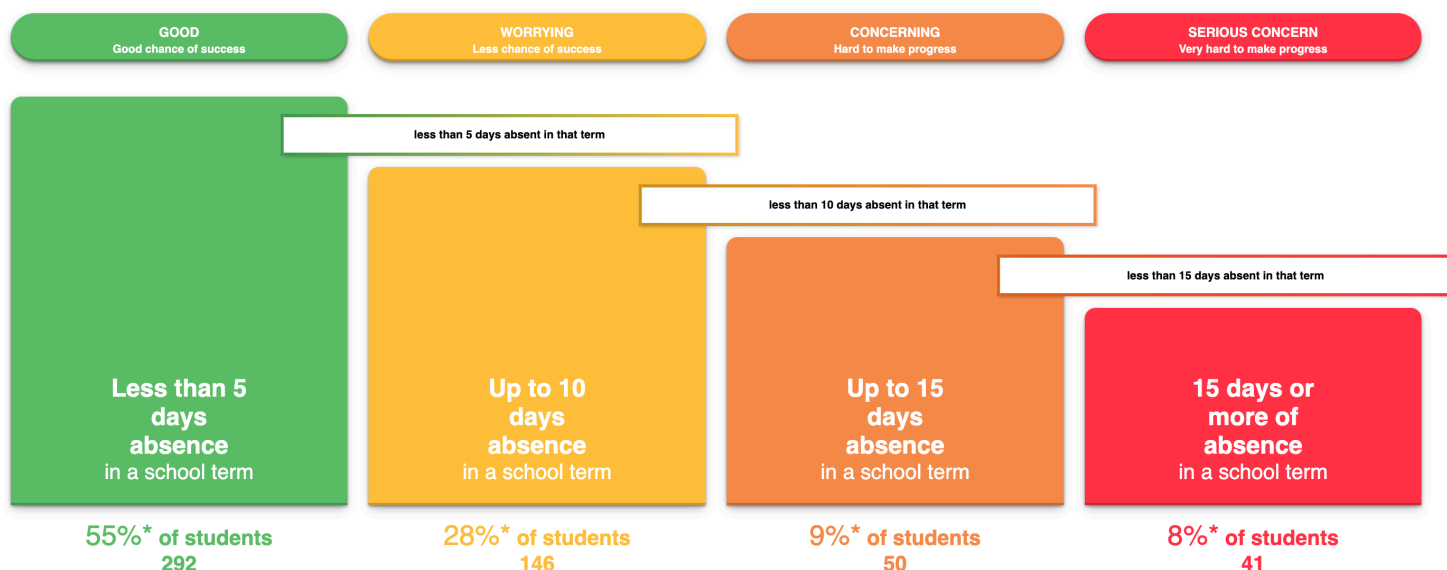


Planning is well underway for 2026 and we are looking to open a second reo rua (Māori bilingual class) for years 4-6. We will be contacting whanau who attended last years' hui and have children in those years and if space allows, we will also reach out to whanau who may not have attended. Space will be limited to 20 children.

**ATTENDANCE UPDATE** – I will be including an attendance update each newsletter to let you know how we are tracking towards our annual goal of improving our attendance each term to 60% of students 'Regularly Attending'. This week we are tracking at 55% of students who have had less than 5 days absent this term!

Remember regular attendance is key to ongoing student success. When we look at student achievement and attendance, we can see a drop in achievement for students moving from year 2 to 3. Once a child is not achieving, it becomes harder to accelerate their progress and over the years, the gap increases. Accelerating progress is especially hard when a child is also not regularly attending. Then when a child is identified as needing extra support, accessing help – either through Ministry of Education or the RTLb service is also more difficult when a child has poor attendance.

The Government's target is for **80% of students to attend regularly**, that is to attend school more than **90% of the time**.



We know that when children attend regularly, they develop strong friendships, a sense of belonging to the class and a positive learning relationship with their teacher. We also find that there is a better relationship between whanau and the teacher and school when children are regularly attending.

Next term we will be contacting whanau who have children with 'Concerning' attendance. That would be children who have had 45 days (9 weeks) absence already this year. You will get a letter from the school with your child's attendance if their attendance is sitting in the concerning range. From there we will develop a plan together.

## OUT OF ZONE ENROLMENTS FOR 2026



'Out of Zone' enrolments for 2026 close on 8 October 2025 with the ballot being drawn on 15 October. If your child is turning 5 next year and you are living outside of our zone, please fill in an out of zone enrolment to avoid disappointment. Once you have been accepted, your place is secure. Currently there will be no 'out of zone' spaces available for 2025 in Kahukura, we can place your child on out waitlist.

Being aware of students joining us, helps us to plan for staffing and resourcing.



There will be a lot of building happening around the school in term 4, with classroom and toilet upgrades beginning. This will mean that some classes will be working out of the hall across the term. First up for upgrades are rooms 7-10 and Potu 17-19. Potu 17 – 19 will start the term working together in the hall while their new toilets and joinery are installed.

SKiDs and music School will be operating out of different spaces and these will be confirmed in the final newsletter of the term.

Have an amazing week.

Leisha Byrnes

PRINCIPAL

***Our motto – In The Gate by Half Past Eight Guarantees You Won't be Late!***

## WHAT'S COMING UP

<b>TERM THREE, 2025</b>		
Week 8 1 – 5 Sept	CONSERVATION WEEK Thursday, 4 <sup>th</sup> September Friday, 5 <sup>th</sup> September	Yr 5/6 & 7/8 Speech Comp, Royal Rd School Fathers Day breakfast, staffroom, 7.30am-8.30am, all Fathers welcome Swimming lessons, Rms 7-10 and 20-28 Moemoe Fou & Ruma 27 Waitakere Gymnastics trip
Week 9 8 – 12 Sept	Monday, 8 <sup>th</sup> September Tuesday, 9 <sup>th</sup> September Wednesday, 10 <sup>th</sup> September  Thursday, 11 <sup>th</sup> September Friday, 12 <sup>th</sup> September	Totara team Rms 22, 24 & Yr 5's in Rm 25 to Arataki Moemoe Fou Bake Sale, items from \$1.00 Mufti Day, Wacky Wednesday fundraising for PB4L, gold coin donation Board Triennial election voting closes 4pm Year 8's to Tech Moemoe Fou & Ruma 27 Waitakere Gymnastics trip Swimming lessons, Rms 7-10 and 20-28
Week 10 15 – 19 Sept	Monday, 15 <sup>th</sup> September  Wednesday, 17 <sup>th</sup> September  Thursday, 18 <sup>th</sup> September  Friday, 19 <sup>th</sup> September	Totara team Rms 23, 28 & Rm 25 Yr 4's to Arataki Yr 7/8 girls netball team to Massey High School Netball tournament Norwest Yr 7/8 boys & girls Netball comp, Trusts arena Yr 2's to Zita Maria Park Moemoe Fou treats sale Swimming make up lessons <b>LAST DAY TERM 3. SCHOOL CLOSSES 3PM</b>
<b>TERM FOUR</b>		
Week 1 6 – 10 Oct	Monday, 6 <sup>th</sup> October  Friday, 10 <sup>th</sup> October	School starts 8.50am Year 8's Tech Enviro group field trip to Tiritiri Matangi

## GENERAL NOTICES

After school care is provided from 3pm to 6pm Monday to Friday in the school hall by **SKiDS**. Contact SKiDS directly for more information and to enrol your child, 027 293 8895.

**Whanau and Friends** – our PTA do an amazing job and are always looking for people to join their group. They meet at school and work with us to plan school fundraisers, help with events and run our much loved junior discos. They have run amazing Quizz Nights in the past as well. If you would like to join them – they do have a lot of laughs at meetings, please get in touch with Gabby Hooper at; [PTA@lincolnheights.school.nz](mailto:PTA@lincolnheights.school.nz) or keep a look out on Facebook for a meeting reminder.

Remember to **let the school know if your child is absent** so we can ensure the information is accurately recorded on our Student Management System. The Ministry of Education collects this data daily and creates a report on the number of absences and the recorded reason. When you haven't contacted the school, the reason gets recorded as ? unknown.

If you have recently **changed addresses or your phone number, please let the school know** – our E-Tap messages and teacher contact rely on having your current number.



## FROM THE BOARD

Raewyn Clark – Presiding Member – contact [bot@lincolnheights.school.nz](mailto:bot@lincolnheights.school.nz)



Raewyn Clark

Rob Walker

Kiri McCabe

Sarah Pope

Holly Vega

A warm welcome to Holly Vega who replaces Gordon Irving as Staff Representative on our Board. Holly is a teacher in our senior school. Our thanks to Gordon for his long and dedicated service to the community on our Board.

At the 27 August meeting we farewelled Ken Tuioti and Maria Sydney who have stepped down as they take on new challenges. We value and appreciate their commitment to serving our community and wish them all the best.

Remember to have your say and vote in our triennial elections. Voting closes at 4pm on 10 September, next week! We encourage you to have your voting forms to us by that date. **Tick three names of your choice on the voting form.** You can pop the forms into the office in the envelope that was provided with your forms. Thank you to Va'a Eteuati, Kiri McCabe, Chance Taylor and Rob Walker for standing.

### Elections timeline:

Wednesday 10<sup>th</sup> September – poll closes at 4pm

Monday 15<sup>th</sup> September – last day to accept postal votes

Tuesday 16<sup>th</sup> September – votes counted

Wednesday 17<sup>th</sup> September – Board takes office

## SPORTS NOTICES

A lot has been happening this term in sports and we couldn't do it without the dedication of our amazing coaches and managers. We have teachers and learning support staff who give up their afternoons and every Saturday to coach teams, alongside dedicated parent coaches and managers. We can't offer sports without your support. If you would like to be part of our amazing coaching or managing team, please let us know.



Swimming is happening this term. Please ensure your child has their swimming gear on their swimming day. Every child in New Zealand should know how to swim and be safe in the water. As a nation we have too many children and young people drowning because they don't know strategies to keep themselves safe in and around the water. If your child is unable to swim due to illness, please send a note excusing them from swimming.



## UPCOMING SCHOOL EVENTS

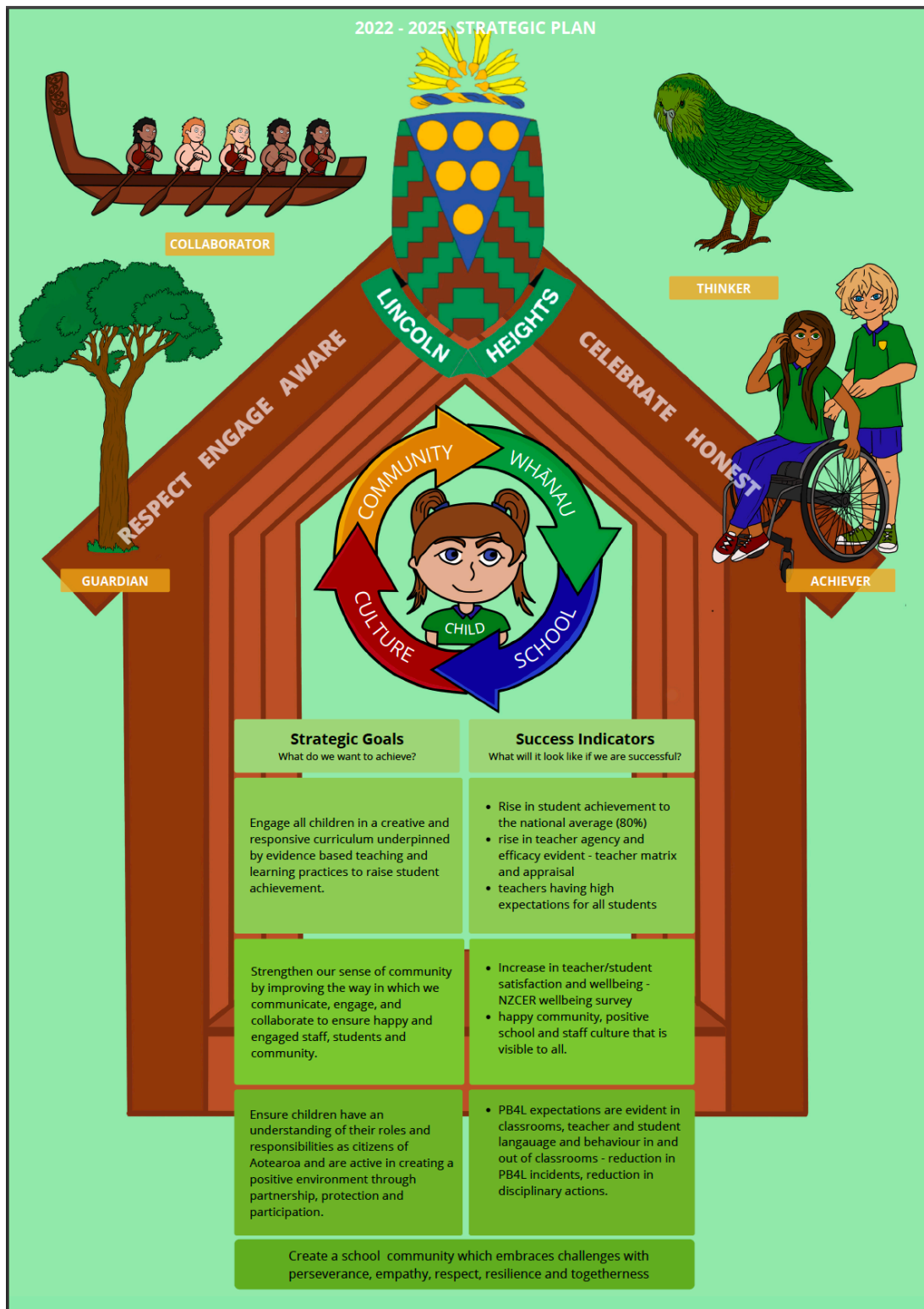


## OUR STRATEGIC AND ANNUAL PLAN

This year we will begin our review of our Strategic Plan and we want you to help us with this piece of mahi. The plan will guide the direction of the school for the next 3 years. We will be holding meetings and focus groups, collecting our student voice and maybe even canvassing our parents at pick up time.

The more voices we have, the better our strategic plan will represent the aspirations of our diverse school community. Fill in the survey on the link and share your thoughts on how we can shape Lincoln Heights moving forward.

# 2022 - 2025 STRATEGIC PLAN



# LINCOLN HEIGHTS SCHOOL ANNUAL PLAN 2025

Raise student achievement to 75% 'At' or 'Above' in core curriculum areas ~ Increase 'regular' student attendance to 60%

<b>Domain 1 – STEWARDSHIP</b> Through increased engagement and strengthened learning focused relationships	<b>Domain 2 – LEADERSHIP</b> Through transparent leadership (with children at the heart of decision making) and a focus on the development of our Middle Leaders	<b>Domain 3 – RELATIONSHIPS</b> Through authentic relevant and engaging opportunities for ALL learners across ALL contexts – within school, with whanau and within our community	<b>Domain 4 – TEACHING</b> Through differentiated learning programmes based on current student data – including Kahukura and Moemoe Fou	<b>Domain 5 – CAPABILITY</b> Through responsive Professional Learning Programmes and individual accountability	<b>Domain 6 – EVALUATION</b> Through established systems to monitor and review progress towards achievements of schoolwide and individual goals
---	---	---	--	---	--

<b>LEARNERS AT THE CENTRE</b> Learners with their whānau are at the centre of education	<b>BARRIER FREE ACCESS</b> Great education opportunities and outcomes are within reach for every learner	<b>QUALITY TEACHING AND LEADERSHIP</b> Quality teaching and leadership make the difference for learners and their whānau	<b>FUTURE OF LEARNING AND WORK</b> Learning that is relevant to the lives of New Zealanders today and throughout their lives	<b>WORLD CLASS INCLUSIVE PUBLIC EDUCATION</b> New Zealand education is trusted and sustainable
--	---	---	---	---



<b>Strengthen our sense of community by improving the ways in which we communicate, engage and collaborate to ensure happy and engaged staff, students and the wider community.</b> <b>Goal 1.1</b> Increase opportunities to build our learning community with whanau and wider – at least 1 event per term Post event Whanau surveys/voice show 85% satisfaction <b>Goal 1.2</b> Establish a Whānau Network to help our Reo Rūa build whanaungatanga through the development of its tikanga and kawa <b>Goal 1.3</b> Refresh our communication systems – newsletter, website, skool loop and socials to increase engagement and attendance	<b>Engage all children in a creative and responsive curriculum underpinned by evidence based teaching and learning practises to raise student achievement.</b> <b>Goal 2.1</b> Increase Maori achievement and engagement by 15% across all core curriculum areas Establish Te Reo class and monitor student progress <b>Goal 2.2</b> Mainstream IEPs reviewed bi-annually and used to inform Learning Support Staff role in class – students show 85% of goal achievement <b>Goal 2.3</b> Reading data (both summative and formative) will show a minimum 10% increase in years 4-8 and 15% increase in years 0-3	<b>Ensure children have an understanding of their roles and responsibilities as citizens of Aotearoa and are active in creating a positive environment through partnership, protection and participation</b> <b>Goal 3.1</b> 60% of students are present 90% or more each term <b>Goal 3.2</b> Students (particularly in year 6-8) have opportunities to demonstrate leadership and have roles of responsibility across the school All LA students expected to participate in service to the school <b>Goal 3.3</b> Staff and students will have opportunities to share their skills and knowledge in cultural / sporting / environmental groups. All teaching staff to lead/support a cultural group and/or sporting group
---	--	--

## MEASURES – All staff are responsible for ensuring we reach these goals

- 75% of children 'at' or 'above' in Reading, Writing and Mathematics
- 15% increased engagement of all learners – demonstrated through engagement observations
- Average rates of regular attendance increase across the school to 60% average each term

- 60% of students are able to say where they are at in their learning
- 75% of children achieving 'Well/Below' will make accelerated progress
- 80% of **Focus/Target** students will make accelerated progress
- Moderation is consistent and regular across the school – every term

## How will we know? / What tools can we use?

- PAT, AsTTle, Teacher OTJ
- Termly school attendance report, classroom, school monitoring fortnightly
- All **BoT** members are confident of their understanding of the school targets
- Team Leader discussions show children know what they are learning
- Sprint** cycles show improvement
- Focus student report to Board show 80% of students making accelerated progress



# Lincoln Heights School

Thanks to the below businesses for sponsoring our school app:

**AKA Difference**  
Discover the AKA Difference  
We're in your neighbourhood!  
aka.org.nz

**SCRATCHPAD**  
TECHNOLOGY LEARNING CENTRES  
GIVE YOUR CHILD HEAD START IN TECHNOLOGY LEARNING  
CODING | ROBOTICS | 3D PRINTING

**RE/MAX TEAM JERRY**  
Partners  
Sales Consultant - Janet Gomez & Gema Campo  
022 696 0314 & 021 266 9109

**MORRISONS**  
FUNERALS  
Tap Here

**BRIDGESTONE TYRE CENTRE Westgate**

**le photographe**  
PHOTOGRAPHY SERVICES  
Paka (Brian) Croisy  
(022) 199 1668

**CAPITA**  
ELECTRICAL

**Deck&Fence Pro**  
Deck Cleaning & Restoration Services

**Hair on Rosebank**

**Fielding Earthworks & Civil Limited**

**floorwise**  
www.floorwise.co.nz

**Clive Whalen**  
The right salesperson makes all the difference

**BARFOOT & THOMPSON**

If you would like to advertise on the Lincoln Heights School Skool Loop App please email [Content@skoolloop.com](mailto:Content@skoolloop.com)



To download our app: In Google Play & App Store search 'Skool Loop' & choose School once installed.